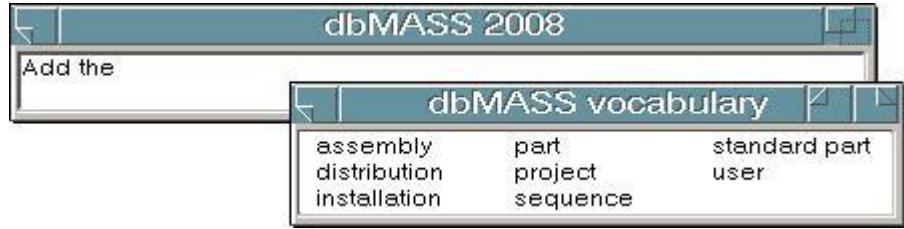


<http://www.i-e-Solutions.com>

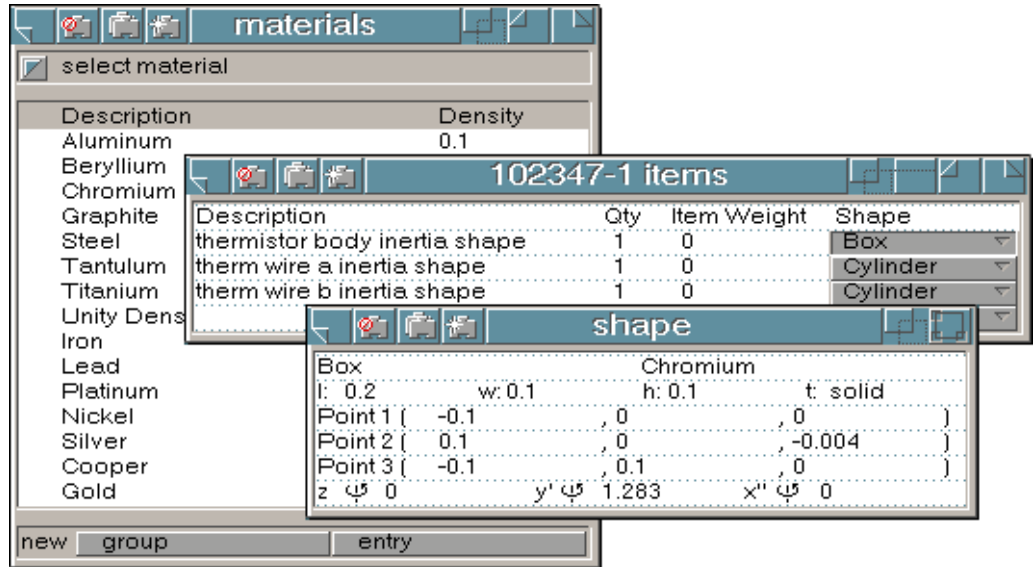
Nothing gets you through a day like dbMASS.

8:00 AM

Start your day by grabbing a cup of coffee and that part drawing from engineering (remember that pile of drawings dropped off on your desk last night?). Opening dbMASS, you add it to your mass properties database. Since your dbMASS database mirrors the project drawing tree, it will be easy to find and update the drawing when engineering changes its mind again (dbMASS uses a relational database, so you only have to make those changes in one place).

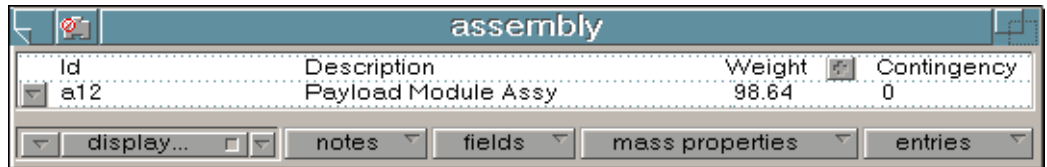


Pulling up the automated calculation sheet, you breeze through the weight, CG and mass properties estimations using an extensive library of standard shapes and materials.

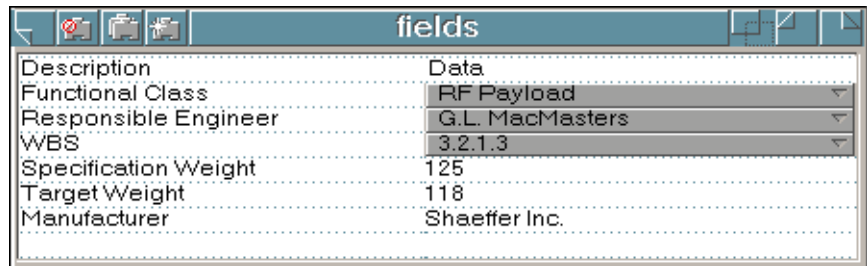


8:30 AM

After confirming that the next assembly estimated weights are within specifications, you call Mike from engineering with the preliminary results.

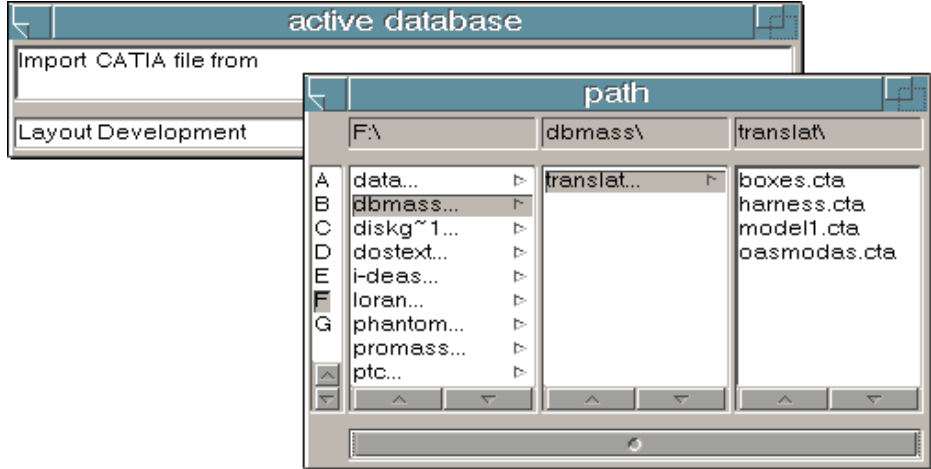


While he is on the line, you verify with him the responsible engineer and WBS core. Mike reminds you that Carol from purchasing wants manufacturer information. Just add a new field to your database to track the original manufacturer and dbMASS has allowed you to track more information with your mass properties database.

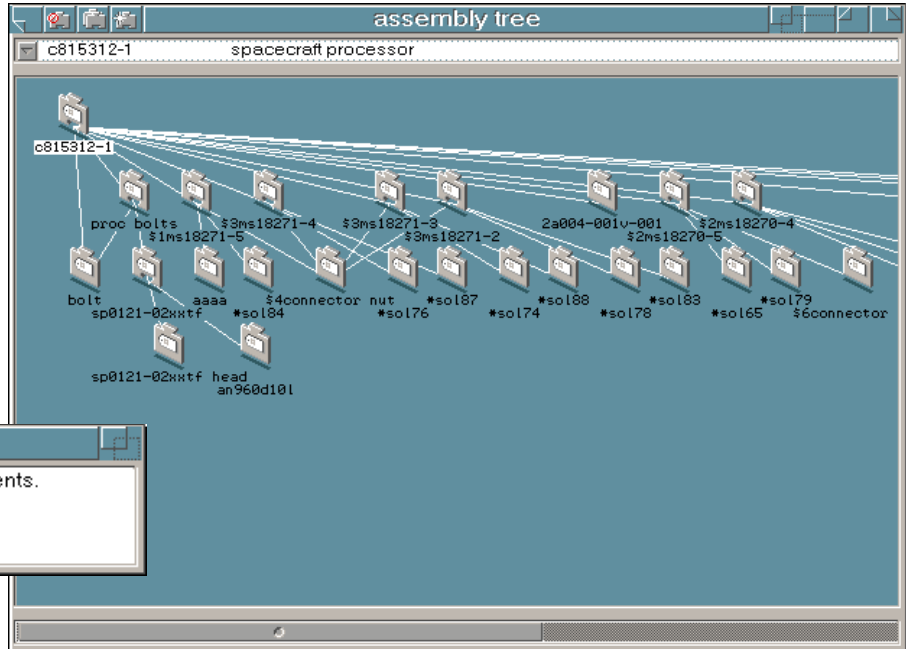


9:15 AM

A call comes in from Sharon at the data center. The information you requested from the CATIA® design database is available. The data file is available on the network. Setting aside the paper drawings you were estimating, you quickly transfer over the CATIA mass properties data and add it to your project database.

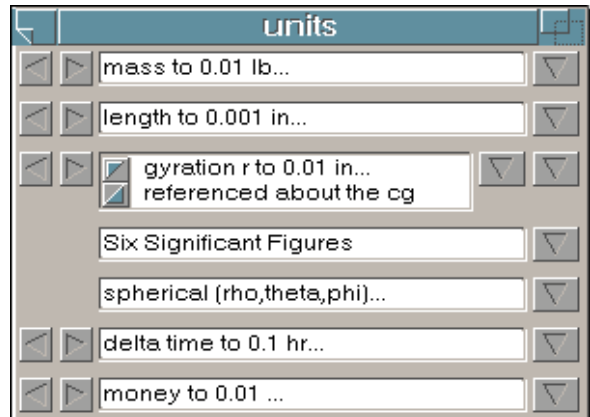


Calling up the assembly tree you easily determine the organization of the translated parts to define materials. After making a couple of notes on the parts that will take some additional work to fully estimate, you return to that pile of drawings.

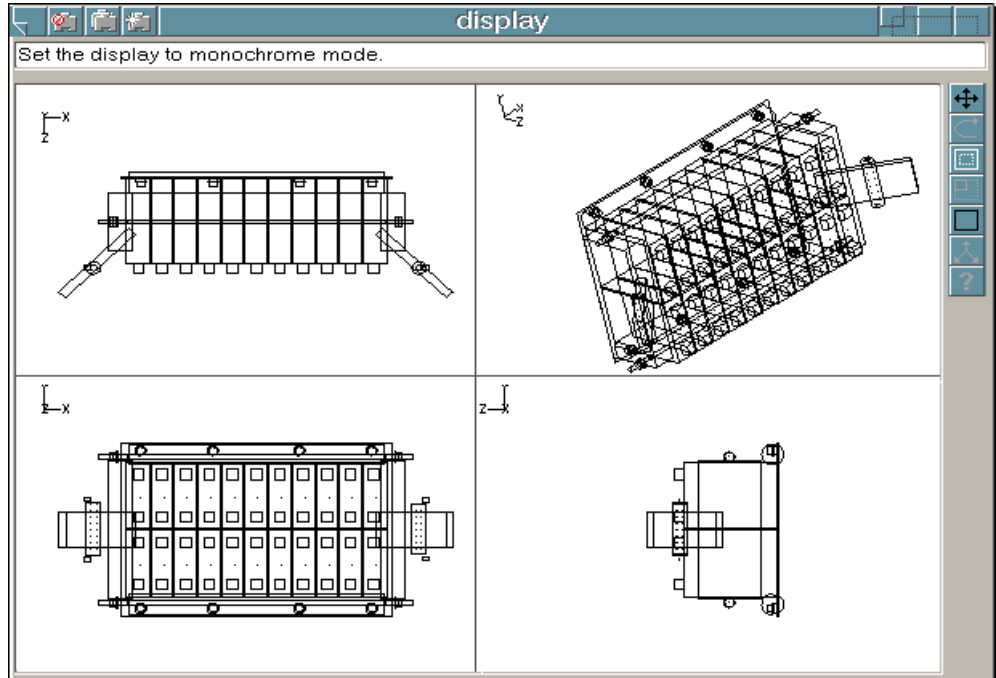


11:35 AM

The last part drawing in the pile is from the new kid Perrin, and is, of course, in metric while all the rest of your drawings are in inches. You simply switch the active units to metric and proceed with entering the dimensions. dbMASS takes care of the unit translation for you.



Just before heading off to lunch you call up the graphical display to verify your morning's work. Everything looks great so you head out.



1:15 PM

Now to finish those assembly drawings...

While you were out at lunch, your co-worker Ron exported into your database the part estimations he was working on yesterday.

Calling up the assembly calculation sheet you incorporate Ron's updates and the parts you were working on this morning. Using the built in calculator and graphical verification you polish off the rest of the drawings in your in-basket.

4:00 PM

Just as you locate the last part, your manager comes in with a data request due first thing tomorrow morning. It seems marketing has increased the capacity of the fuel tanks and has promised the engineering data for both configurations to the customer at an 8:00 am meeting.

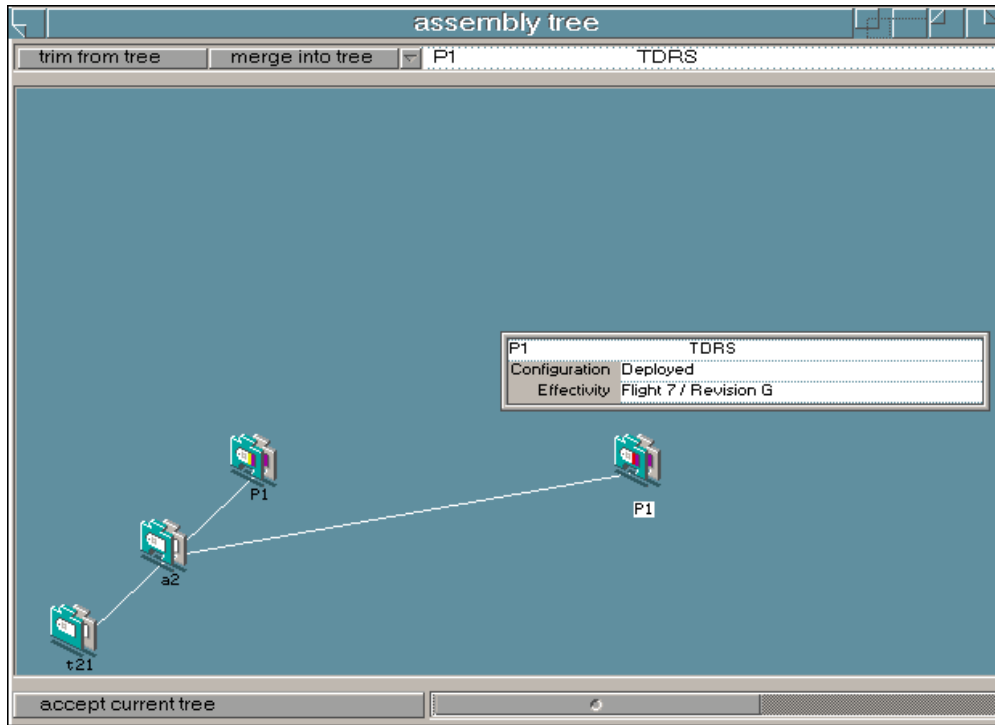
Id	Description	Qty	Unit Weight	Location
t857	Misc Hdwe - Upper c/0	1	3.61	
t858	Panel - p4	1	38.74	
t859	Rail, P/I Mod	1	0.36	
t860	Rail, P/I Mod	1	0.27	
t861	Channel Closure - P/I	1	0.86	
t862	Char			
t863	Char			
t864	Char			
t865	Char			
t866	Panel			
t867	Rail,			
t868	Rail,			
t869	Char			
t870	Char			
t871	Char			
t872	Char			
t873	Char			
t874	Panel - p2	1	27.42	
		1	0.69	
		1	0.51	
		1	0.86	
		1	0.25	
		1	0.25	
		1	0.01	
		1	0.06	
		1	12.14	
		1	0.36	
		1	0.27	
		1	0.86	
		1	0.25	

You start off by making a copy of the fuel tank. Since the fuel tank part number has not changed, you define a new configuration of the tank making note of the requested increase in fuel capacity.



4:10 PM

You now let dbMASS find all the assemblies, installations and projects affected by the changed in tank weight. Once you have defined which of these will be included in the marketing configuration, you let dbMASS build the database for you.

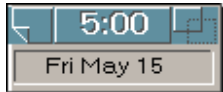
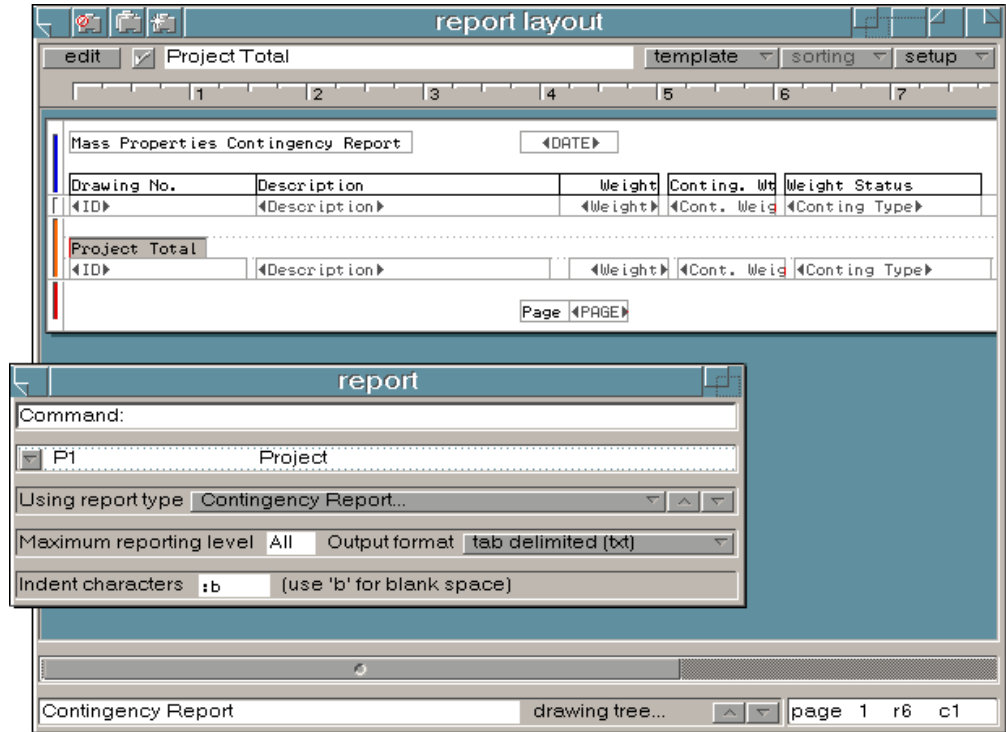


4:15 PM

Now all you have to do is re-estimate the new fuel weight.

4:45 PM

You're finished with re-estimating the mass properties. You call up your previously defined ad-hoc report and verify that it gives all the information that marketing will require when they meet with the customer. After making a few minor adjustments you create and print out the report.



dbMASS reminds you that it is time to go home. You drop off the marketing report on your manager's desk on the way out.

Thank you for taking time to investigate dbMASS!

For further information please contact:

Jerry Fleck
3742 Saddle Drive
Carlsbad, CA 92010 USA
Voice 760-434-0115
Fax 760-434-0116
E-Mail JerryFleck@i-e-solutions.com